

1

AREA OF USE

2

SUBSTRATES

3

INSTALLATION

4

FIRST USE

5

MAINTENANCE/GUARANTEE

*Residential use, temperature-regulated interior room > **15°C**.*

Loose-lay installation must not be > 150 m².

*We recommend having **temperature regulation** (air conditioning, etc.) or **preventing exposure to direct sunlight** (curtains, blinds, etc.).*

*Installation on areas exposed to sunlight, in front of bay windows, skylights, or fireplaces (significant temperature variation) **will require gluing down**.*

This floor covering cannot be laid on verandas.

IMPORTANT: The information in this document is valid from: 30/05/2022 and is subject to change without notice. In the face of continuous technical improvements, before starting any work, our customers should check with us that this document is still in force.

[013_{v1}] SENSO 20 LOCK

1

2

3

4

5

AREA OF USE

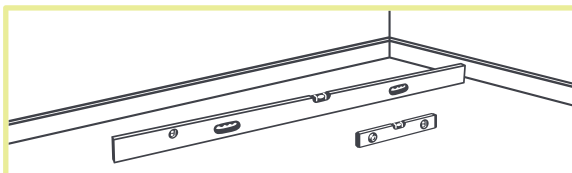
SUBSTRATES

INSTALLATION

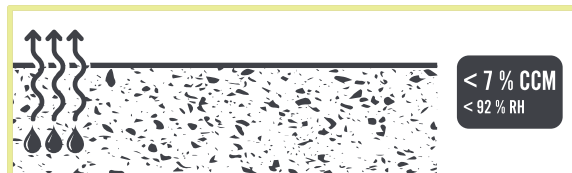
FIRST USE

MAINTENANCE/GUARANTEE

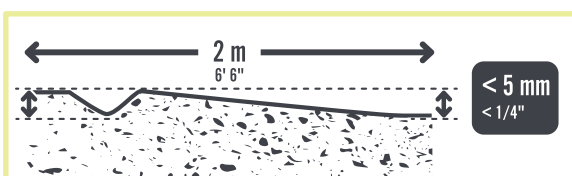
1. GENERAL



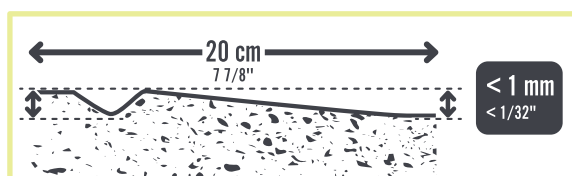
The flooring must be laid on a flat, clean, sound, dry and solid substrate.



The moisture content must not exceed 7% with a carbide moisture test.



The flatness tolerance must be < 5 mm under a 2-metre straight edge.



The substrate must not have any uneven areas > 1 mm every 20 cm.

2. RECOMMENDATIONS BY SUBSTRATE TYPE

Substrate

Conditions

Ceramic tiles	✓	Fix the unsealed tiles. Clean. Apply a levelling compound. Sand and apply a primer.
Concrete floor, painted concrete, levelling concrete, liquid cement screeds	✓	If the floor has too many irregularities, apply a levelling compound
Anhydrite screed	✓	If humidity < 0.5 %.
Compact vinyl floor	✓	Stick tiles or rolls back down if necessary or remove the flooring if there are too many irregularities and apply a patching compound.
Acoustic vinyl floor / Carpet / Laminate floor	✗	Removal mandatory. If necessary, apply a levelling compound to eliminate any surface irregularities.
Wood strip flooring and timber panels	✓	If not glued, attached to battens. If glued, remove. If the existing floor is too flexible, cover with 19 mm lining board and fix down.
OSB floor	✗	Cover with 19 mm lining board and fix down.
Underlayer	✓	Only Gerflor acoustic underlayers Silence Plus 19 dB and Gerflor Acoustic 15 dB, in premises classified max CEN 22. Refer to corresponding installation guidelines. Installation on any other underlay is not possible
Floors with underfloor heating / air conditioning RFH: Radiant Floor Heating	✓	Substrate temperature does not exceed 28°C in all areas. Turn the heating off 24 hours prior to installation. Restart the heating gradually. Must be glued.

[013_{v1}] SENSO 20 LOCK

1

2

3

4

5

AREA OF USE

SUBSTRATES

INSTALLATION

FIRST USE

MAINTENANCE/GUARANTEE

1. BEFORE LAYING

All floor and wall coverings should be examined prior to installation for any visible defects.

To ensure colour uniformity, the floor covering laid in any one room should be from the same manufacturing batch, marked on the packaging.

The room temperature during installation must be between 15°C and 28°C.

The planks or tiles must be stored in the room for 24 hours before installation.

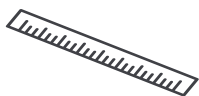
2. TOOLS



Utility knife



Tape measure



Metal rule



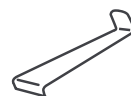
Non-rebound mallet



Cut-resistant gloves



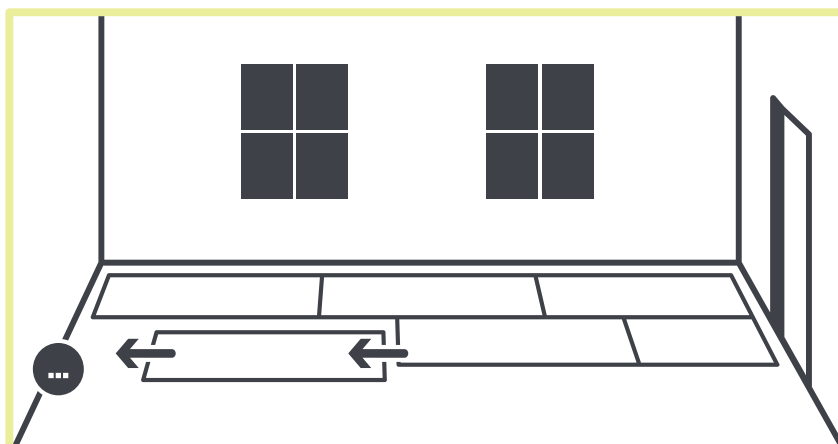
Tapping block



Pull bar

3. LAYING DIRECTION

The planks/tiles must be oriented towards the wall with the main window, or lengthwise.



1

2

3

4

5

AREA OF USE

SUBSTRATES

INSTALLATION

FIRST USE

MAINTENANCE/GUARANTEED

4. LAYING OUT THE GUIDELINES

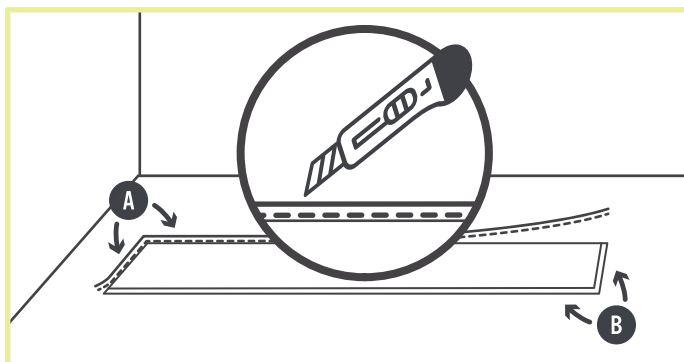
- Measure the width of the room then divide it by the width of a plank/tile. Round up the result to the nearest unit.
- If the result is an even number, the axis will be equidistant from the walls (centred axis).
- If the result is an odd number, shift the centred axis by half a plank/tile width (offset axis).
- Move the centre axis or offset axis by a multiple of the plank/tile width so it runs along the starting wall.

5. INSTALLING THE TILES / PLANKS

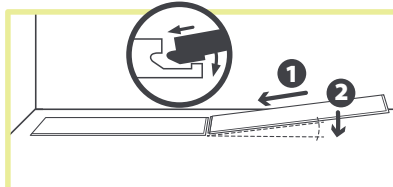
Begin laying along one of the walls, starting from the left corner of the room.

1. The tongues (male side) facing the wall must be cut off (A).
The grooves (female side) must always be visible (B).
2. Lay the next tile/plank at a slight angle to insert the tongue into the groove of the previous tile/plank.
The subsequent rows must be offset by half or 1/3 of the length for tiles and 1/3 for planks.
3. To assemble the first tile/plank of the next row, place the tile/plank at an angle to insert the tongue of the long side into the groove of the tiles/planks in the first row.
4. For subsequent tiles/planks, assemble the short side and then the long side, keeping the tile/plank at an angle.
5. The planks / tiles are interlocked by striking with a mallet and using a tapping block, starting with the short edge.
6. Re-use offcuts of more than 30 cm for tiles /15 cm for planks, to begin subsequent rows.

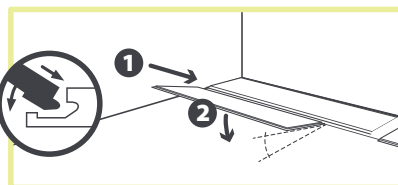
1.



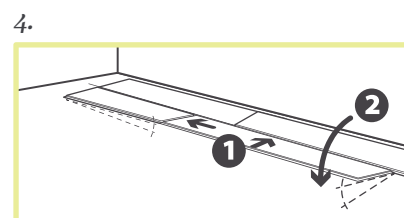
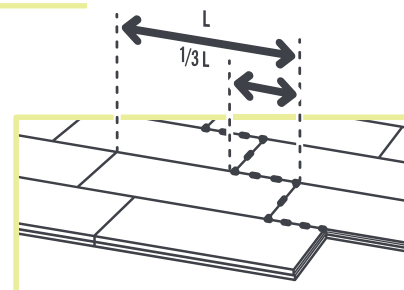
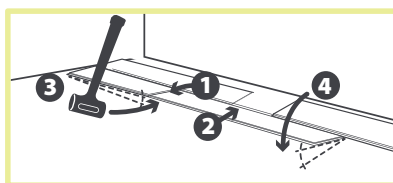
2.



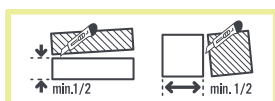
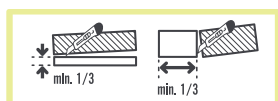
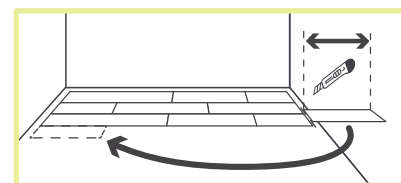
3.



5.



6.



[013_{v1}] SENSO 20 LOCK

1

2

3

4

5

AREA OF USE

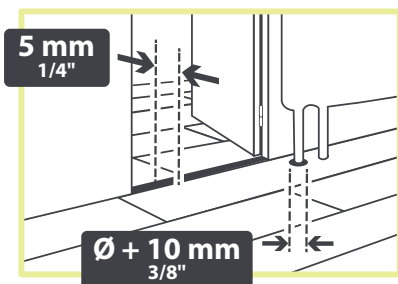
SUBSTRATES

INSTALLATION

FIRST USE

MAINTENANCE/GUARANTEE

6. EDGE CLEARANCE

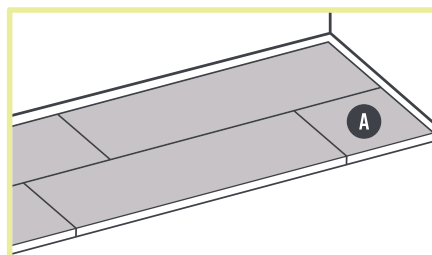
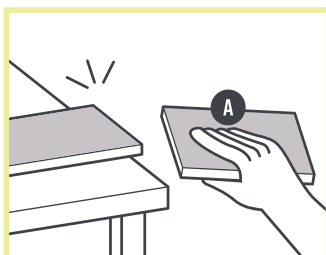
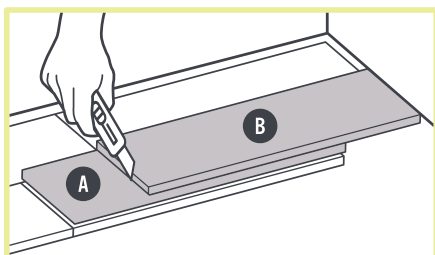


A maximum edge clearance of 4 to 5 mm should be left around the edge of the room and around fixed objects.

TIP: USE OFFCUTS OF PLANKS OR TILES AS SPACING WEDGES.

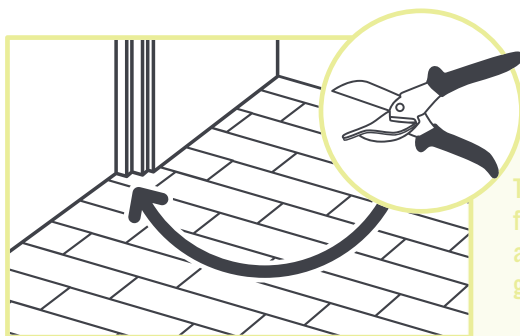
7. CUT

Cutting at the end of a row:



Cuts are made using a cutter:

- With the straight blade, make one or more cuts along the surface of the plank.
- Bend the plank / tile to snap it.



TIP : For cutting around door frame bases and areas which are difficult to access, use gripper shears

[013_{v1}]
SENSO
20 LOCK

1

AREA OF USE

2

SUBSTRATES

3

INSTALLATION

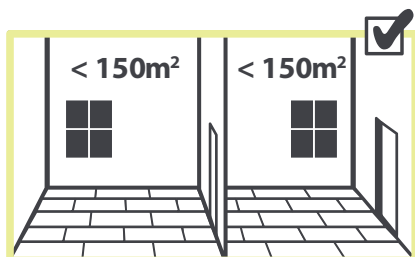
4

FIRST USE

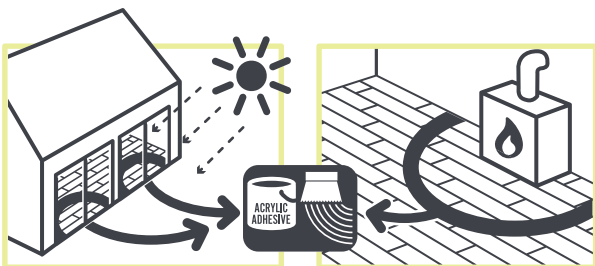
5

MAINTENANCE/GUARANTEE

8. REMINDER



Loose-lay installation must not be > 150 m²



In front of a bay window, fireplace and any other source of excessive heat, planks / tiles should be stuck down over 50 cm to 1 m.

In bathrooms we recommend applying a PU or MS Polymer sealant around the edges of baths and showers.

1

AREA OF USE

2

SUBSTRATES

3

INSTALLATION

4

FIRST USE

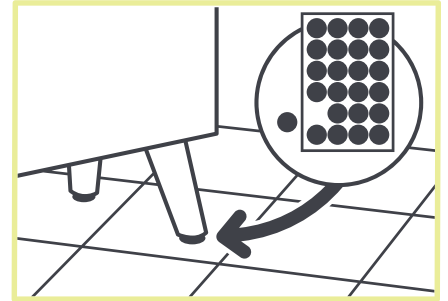
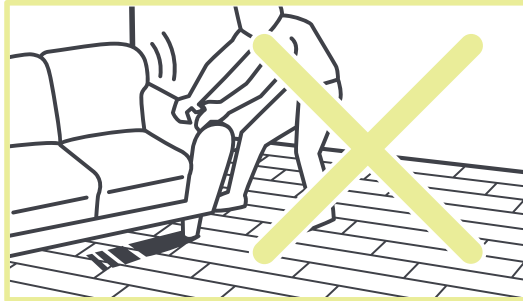
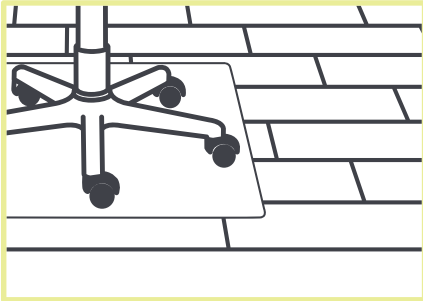
5

MAINTENANCE/GUARANTEE

*The flooring can be used **immediately** after laying.*

Take precautions before use of heavy furniture and chairs with castors (felt caps or protective mats) –

Do not use rubber feet (risk of black stains).



1	2	3	4	5
AREA OF USE	SUBSTRATES	INSTALLATION	FIRST USE	MAINTENANCE/GUARANTEES

Cleaning your floor: vacuum cleaner or damp mop. Regular non-abrasive detergent.

Tough stains: diluted liquid bleach, white spirit, ethyl alcohol, or lemon juice.

Stubborn stains (ink, tomato, mustard, blood, beetroot, Mercurochrome): let diluted liquid bleach sit for several minutes, without rubbing. Rinse thoroughly.

Rust: clean using a textile rust remover. Rinse thoroughly.

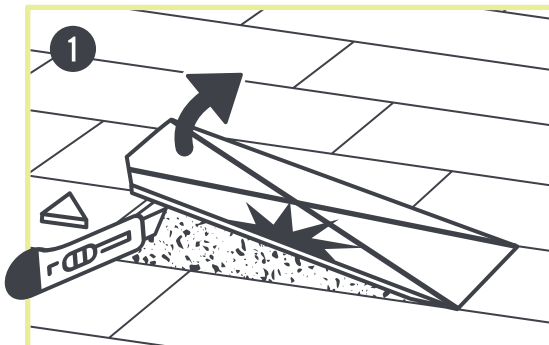
Grease, pen, felt pen: rub lightly with a cloth soaked in white spirit. Rinse thoroughly.

Maintenance precautions: do not use acetone or chlorinated solvents (e.g. trichloroethylene). Never use waxes or vitrifying varnish.

The Gerflor commercial warranty for domestic products is available on www.gerflor.com

To replace a plank/tile:

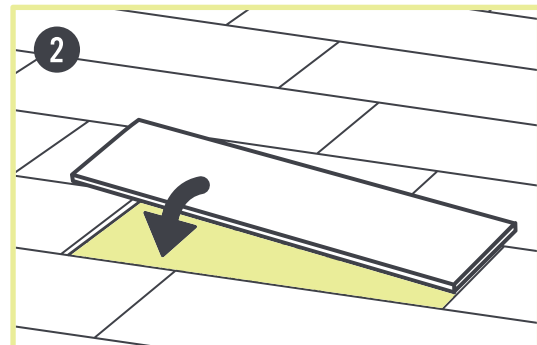
We recommend keeping a few planks / tiles from the installed series to use as replacements in the future.



Cut the plank diagonally using a straight blade followed by a hooked blade.

Disengage the plank.

Remove the tongues from existing planks / tiles, and from the new plank / tile



Apply double-sided adhesive tape beneath the plank. Replace with the new plank / tile.

ADDITIONAL INFORMATION: The joints between tiles/planks may separate – this is part of natural ageing and does not need to be repaired.